



Manual backpack sprayer with 16 litre capacity and a lance and metal nozzle. Sprayer suitable for use in large gardens.



Advantages

- Classic brass lance.
- It includes a mixer to ensure the homogeneity in the mixing of the treatment.
- Adjustable padded straps.
- Homogeneous treatment thanks to the pressure regulator.
- Lever fastening to make transportation easier.
- Ambidextrous and lightweight keeping the ergonomics.



Functional information



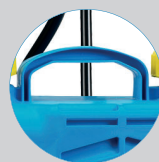
3-position pressure regulator



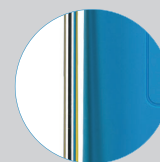
Lance/lever support



Chamber with synthetic seal for intensive use



Integrated and comfortable transport handle



Brass lance



Large filling opening



Adjustable padded straps



Side level indicator

Technical information

Technical information	SUPER AGRO 16
HOSE	1.3 m (PVC)
STANDARD NOZZLES	Metallic adjustable conical
LANCE	Brass 59 cm
USEFUL CAPACITY	16 L
TOTAL CAPACITY	16.6 L
LITRES/MIN. 1,5 BAR	0.7 l/min
LITRES/MIN. 3 BAR	1 l/min
NET WEIGHT	3.40 Kg
WIDE FILLER OPENING	YES
SET OF NOZZLES FOR HERBICIDE AND INSECTICIDE TREATMENTS	YES
STANDARD ACCESSORIES	Pressure regulator, set of nozzles (herbicide elbow plus fan, mirror and disc nozzles), two seals (1 rubber and 1 synthetic) and a dispenser
LANCE AND EXTENSIONS	Lance/Lever
STRAPS	Adjustable and padded
CHAMBER SEAL	Synthetic
PRESSURE REGULATOR	YES (3 positions)
HANDLE	PP

Logistics data

Logistics data	SUPER AGRO 16
CODE	8.39.41
EAN	84.14685.20032.7
CONDITIONING	1 unit
UNITS PER PALLET	16 units
DIMENSIONS PER PALLET	1200 X 800 X 1020

MAINTENANCE KITS



PP MAINTENANCE KIT
Reference 8.39.41.870
Keep your sprayer at peak performance. Designed for 12-20 L sprayers.

ROUND SEAL AN-8 No. 101	2.23.15.908	
STAINLESS STEEL BALL Ø 12 No. 119	2.20.08.902	
VITON SEAL No. 120	8.39.11.305	
ROUND SEAL AN-5 No. 136	2.23.15.905	
CHAMBER VALVE No. 365	8.39.41.303	
FILTER WASHER No. 1034	8.49.41.410	



ACCESSORIES

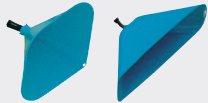
Personalize your sprayer adapting it to your application needs (height, hard-to-reach areas...)



3.2 M TELESCOPIC LANCE
Reference 8.35.40.913
5.4 M TELESCOPIC LANCE
Reference 8.35.40.915



4-HOLE NOZZLE
Reference 8.34.46.801



CONICAL HOOD
Reference 8.34.40.870
RECTANGULAR HOOD
Reference 8.34.40.871



6 M HOSE
Reference 8.30.45.805



DOUBLE ADJUSTABLE NOZZLE
Reference 8.34.46.802



QUADRUPLE BOOM
Reference 8.34.60.870



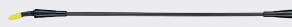
ANTI-DRIFT NOZZLE (INDUCED AIR) 80°
Reference 8.34.46.814
ANTI-DRIFT NOZZLE (INDUCED AIR) 120°
Reference 8.34.46.804



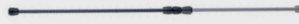
NOZZLE SET
Reference 8.34.46.870



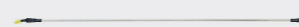
LOW-VOLUME WEED-KILLERS ELBOW
Reference 8.34.60.935



1 M FIBREGLASS LANCE TUBE WITH COMPLETE ELBOW
Reference 8.34.60.873
1.5 M FIBREGLASS LANCE TUBE WITH COMPLETE ELBOW
Reference 8.34.60.874



TELESCOPIC EXTENSION
Reference 8.35.40.876



1 M ALUMINIUM LANCE TUBE WITH COMPLETE ELBOW
Reference 8.34.60.871
1.5 M ALUMINIUM LANCE TUBE WITH COMPLETE ELBOW
Reference 8.34.60.872



EXTENDIBLE DOUBLE NOZZLE
Reference 8.35.40.872



NORMAL WEED-KILLERS ELBOW
Reference 8.34.60.934



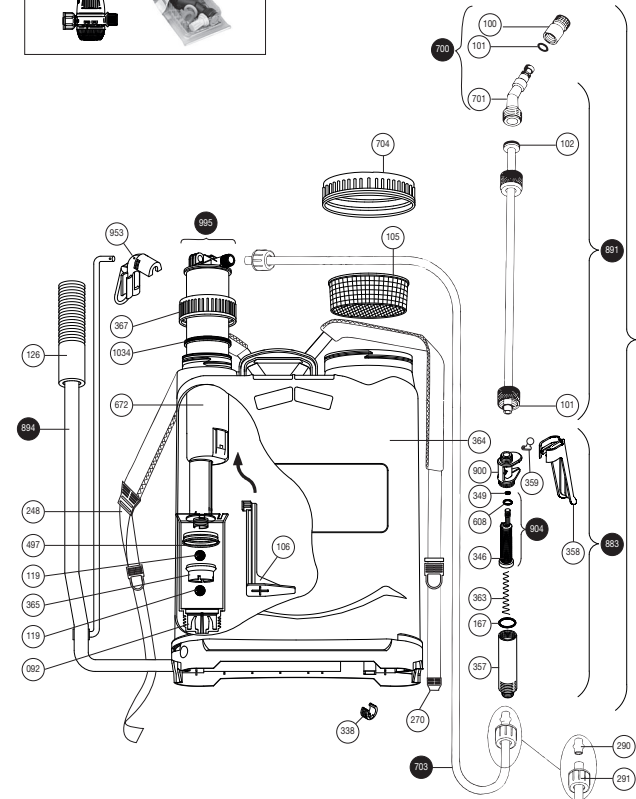
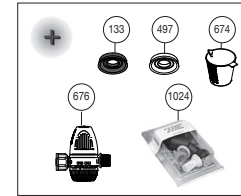
FLEXIBLE DOUBLE NOZZLE
Reference 8.35.40.871



PRESSURE REGULATOR (EVOLUTION - AGRO GREEN TYPE)
Reference 8.35.47.870

SPARE PARTS

Extend the service life of your sprayer easily replacing parts.



N.	COD.	Q	SPARE PARTS NAME
92	8.39.41.603	1	CYLINDER WITH BALL
100	8.39.05.015	1	NOZZLE Ø 1,5
101	2.23.15.908	2	ROUND GASKET AN-8
102	8.42.02.334	1	FLAT WASHER
105	8.39.18.303	1	TANK FILTER
106	8.39.47.306	1	AGITATOR
119	2.20.08.902	2	STAINLESS STEEL BALL Ø 12
126	8.39.43.304.1	1	GRIP
133	8.39.09.306	1	RUBBER SEAL
167	2.23.15.914	1	ROUND GASKET AN-14
248	8.39.41.364	1	STRAP
270	8.39.41.365	1	STRAP WITH HOOK
290	8.38.08.308	2	HOSE BUSHING
291	8.42.02.332	2	NUT
338	8.39.43.327	1	BASE BUSHING
346	8.39.47.365	1	LANCE FILTER
349	2.23.16.903	1	ROUND GASKET AN-3
357	8.39.46.367	1	GRIP
358	8.39.46.368	1	BLACK GRIP
359	8.39.46.369	1	HOOKING
363	8.39.41.342	1	FILTER SPRING
364	8.39.41.850	1	16 L. TANK
365	8.39.41.303	1	SEALING VALVE
367	8.39.47.308	1	GUIDE LID
497	8.39.41.305	2	OPAQUE SYNTHETIC SEAL
608	2.23.16.906	1	ROUND GASKET AN-6
672	8.39.61.302	1	PRESSURE CHAMBER
674	8.39.41.350	1	100 ML DOSER
676	8.34.47.900	1	PRESSURE REGULATOR
700	8.39.06.811	1	COMPLETE ELBOW
701	8.39.06.663	1	SPRAY ELBOW
703	8.39.18.805	1	COMPLETE HOSE
704	8.39.47.602	1	TANK COVER AND VALVE
883	8.39.41.801	1	COMPLETE HANDLE
891	8.39.41.810	1	PIPE WITH BUSHING
892	8.39.41.823	1	COMPLETE LANCE
894	8.39.41.802	1	COMPLETE LEVER
900	8.39.41.809	1	HANDLE BODY
904	8.39.47.811	1	FILTER WITH GASKET
953	8.39.41.811	1	LANCE HOOK
995	8.39.41.804	1	COMPLETE CHAMBER
1024	8.34.46.815	1	NOZZLES SET
1034	8.49.41.410	1	LOCKING WASHER
	8.39.41.200	1	INSTRUCTION SHEET
	8.39.41.201	1	SUPER AGRO 16 PACKAGING