



17 litre capacity fire extinguisher with a powerful lance (8-12 m), folding hose, padded straps, adjustable belt and rigid tank.



Advantages

- High resistance tank for forest works.
- Dual effect lance with large stream range.
- Ergonomic fire extinguisher with lumbar support.

Technical information

| Technical information | FOREST FIRE EXTINGUISHER |
|-----------------------------|---|
| HOSE | 1.75m (PVC) |
| STANDARD NOZZLES | Adjustable brass conical nozzle |
| LANCE | Chromed-plated brass lance with dual effect hydronette system |
| USEFUL CAPACITY | 17 L |
| TOTAL CAPACITY | 17,5 L |
| GROSS WEIGHT | 3.84 Kg |
| NET WEIGHT | 3.35 Kg |
| WIDE FILLER OPENING | YES |
| TRANSLUCENT LEVEL INDICATOR | YES |
| LANCE AND EXTENSIONS | Lance/Hose |
| STRAPS | Padded and adjustable, with waist support |
| VERTICAL STREAM RANGE | 7m |
| HORIZONTAL STREAM RANGE | 12m |
| HORIZONTAL SPRAY RANGE | 4m |

Logistics data

| Logistics data | FOREST FIRE EXTINGUISHER |
|-----------------------|--------------------------|
| CODE | 8.39.08.906 |
| EAN | 84.14685.01045.2 |
| CONDITIONING | 1 units |
| UNITS PER PALLET | 14 units |
| DIMENSIONS PER PALLET | 1200 X 800 X 1020 |

Functional information



Nozzle specially designed to optimise the stream and scope of the spray



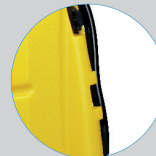
Simple assembly system for easy cleaning and maintenance



Stopper with hermetic seal and pressure release valve



Ergonomic and translucent tank



Hose fastening for transport



Integrated handle



Padded, adjustable straps with waist fastening



Sight glass



Lumbar support, greater comfort



Lance fastening

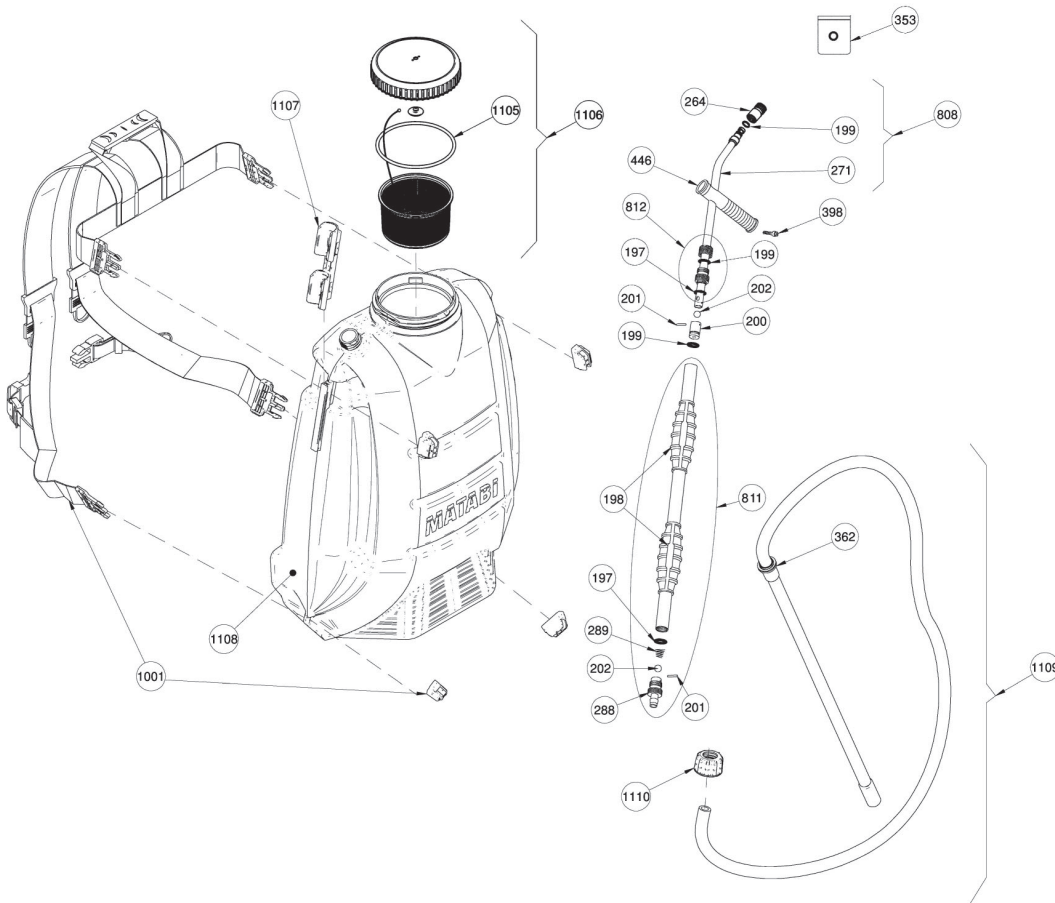


Double-acting pump body to optimise effort



SPARE PARTS

Extend the service life of your sprayer easily replacing parts.



| N. | COD. | Q | SPARE PARTS NAME |
|------|-------------|---|---------------------------|
| 197 | 8.39.04.303 | 2 | RUBBER WASHER |
| 198 | 8.39.04.306 | 2 | GRIP |
| 199 | 2.23.15.911 | 4 | ROUND GASKET AN-11 |
| 200 | 8.39.04.009 | 1 | PISTON |
| 201 | 8.39.04.005 | 2 | PIN |
| 202 | 2.20.08.010 | 2 | STAINLESS STEEL BALL Ø 10 |
| 264 | 8.39.08.017 | 1 | NOZZLE |
| 271 | 8.39.08.620 | 1 | TUBE WITH SPRAYER |
| 288 | 8.39.08.002 | 1 | INLET NIPPLE |
| 289 | 8.39.08.324 | 1 | SPRING |
| 353 | 8.39.04.202 | 1 | BAG OF SPARES |
| 362 | 2.23.15.915 | 1 | ROUND GASKET AN-15 |
| 398 | 2.59.26.740 | 1 | SCREW |
| 446 | 8.39.04.324 | 1 | GRIP |
| 808 | 8.39.08.803 | 1 | TUBE WITH NOZZLE |
| 811 | 8.39.08.801 | 1 | COMPLETE BODY |
| 812 | 8.39.08.805 | 1 | GREASING NIPPLE |
| 1001 | 8.30.43.605 | 1 | STRAP |
| 1105 | 2.23.15.101 | 1 | ROUND GASKET Ø 101 |
| 1106 | 8.39.08.807 | 1 | COMPLETE CAP |
| 1107 | 8.39.08.306 | 1 | EXTINGUISHER BRACKET |
| 1108 | 8.39.08.303 | 1 | TANK |
| 1109 | 8.39.08.808 | 1 | COMPLETE HOSE |
| 1110 | 8.39.08.304 | 1 | NUT |
| | 8.39.08.202 | 1 | INSTRUCTION SHEET |
| | 8.39.08.205 | 1 | PACKAGING |