



Compression sprayer with 4, 6 and 8 litre useful capacity respectively and an integrated design that facilitates the filling and pressurisation functions of the tank. Sprayer suitable for use in medium gardens (Kima 6) and medium and large gardens (Kima 9 and 12).

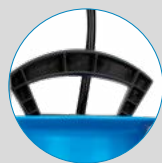


Advantages

- A pressure regulator is included to ensure a homogenous application.
- It includes an extension to increase the spraying range.
- Stable base which allows to hold the sprayer during the pressurization process.
- Complete use of the liquid thanks to the lower hose connection.
- Additional nozzle set.
- Suitable for application of products of natural origin (pelargonicon, acetic, etc...).



Functional information



Ergonomic transport handle



Large funnel-shaped filling opening



Safety valve set at 4 bar



Hose connections to the lance and to the tank by thread without clamps or fittings



Adapted tank base to hold with the feet in the pressurisation process



Low-effort ergonomic handle



2-position pressure regulator



Fibreglass lance



0.42m extension

Technical information

Technical information	KIMA 6	KIMA 9	KIMA 12
VALVE	YES		
HOSE	1.3m PVC		
STANDARD NOZZLES	Adjustable conical		
LANCE	Fibreglass		
USEFUL CAPACITY	4 L	6 L	8 L
TOTAL CAPACITY	6 L	9 L	12 L
LITRES/MIN. 1,5 BAR	0.43 l/m		
LITRES/MIN. 3 BAR	0.6 l/m		
NET WEIGHT	1.5 Kg	1.75 Kg	2 Kg
WIDE FILLER OPENING	YES		
SET OF NOZZLES FOR HERBICIDE AND INSECTICIDE TREATMENTS	YES		
STANDARD ACCESSORIES	Pressure regulator, set of nozzles and 0.42 m extension		
LANCE AND EXTENSIONS	Lance and extension		
STRAPS	Adjustable		
PRESSURE REGULATOR	YES		

Logistics data

Logistics data	KIMA 6	KIMA 9	KIMA 12
CODE	8.38.05	8.38.08	8.38.12
EAN	84.14685.10001.6	84.14685.10002.3	84.14685.10003.0
CONDITIONING	4 units	4 units	2 units
UNITS PER PALLET	48 units	40 units	36 units
DIMENSIONS PER PALLET	1200 X 800 X 1100	1200 X 800 X 1070	1200 X 800 X 1165

MAINTENANCE KITS



PP MAINTENANCE KIT
Reference 8.38.05.870
Keep your sprayer at peak performance. Designed for 5-9 L sprayers.

ROUND SEAL AN-5 No. 136	2.23.15.905	
RETAINER CLAMP No. 164	8.39.02.314	
ROUND SEAL AN-30 No. 159	2.23.15.930	
CHAMBER VALVE No. 165	8.38.05.314.1	



ACCESSORIES

Personalize your sprayer adapting it to your application needs (height, hard-to-reach areas...)



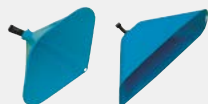
3.2 M TELESCOPIC LANCE
Reference 8.35.40.913
5.4 M TELESCOPIC LANCE
Reference 8.35.40.915



DOUBLE ADJUSTABLE NOZZLE
Reference 8.34.46.802



4-HOLE NOZZLE
Reference 8.34.46.801



CONICAL HOOD
Reference 8.34.40.870
RECTANGULAR HOOD
Reference 8.34.40.871



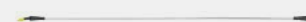
NORMAL WEED-KILLERS ELBOW
Reference 8.34.60.934



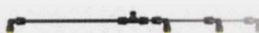
LOW-VOLUME WEED-KILLERS ELBOW
Reference 8.34.60.935



NOZZLE SET
Reference 8.34.46.870



1 M ALUMINIUM LANCE TUBE WITH COMPLETE ELBOW
Reference 8.34.60.871
1.5 M ALUMINIUM LANCE TUBE WITH COMPLETE ELBOW
Reference 8.34.60.872



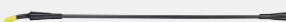
EXTENDIBLE DOUBLE NOZZLE
Reference 8.35.40.872



TELESCOPIC EXTENSION
Reference 8.35.40.876



EXTENSION 0.5M
Reference 8.35.40.870



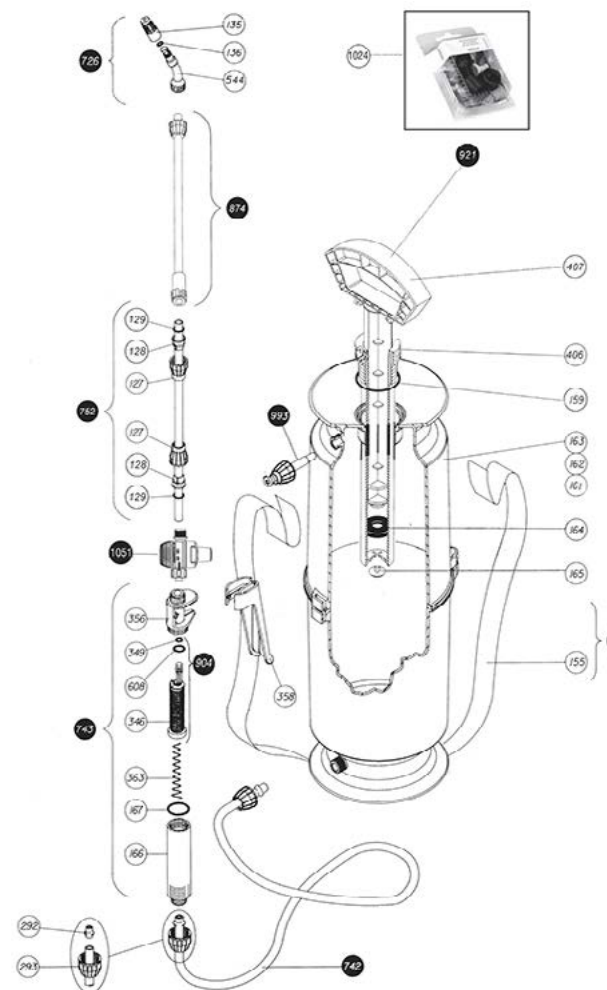
1 M FIBREGLASS LANCE TUBE WITH COMPLETE ELBOW
Reference 8.34.60.873
1.5 M FIBREGLASS LANCE TUBE WITH COMPLETE ELBOW
Reference 8.34.60.874



FLEXIBLE DOUBLE NOZZLE
Reference 8.35.40.871

SPARE PARTS

Extend the service life of your sprayer easily replacing parts.



N.	COD.	Q	SPARE PARTS NAME
127	8.38.12.323	2	CONE NUT
128	8.38.12.324	2	Ø 8 CONE
129	2.23.99.910	2	ROUND GASKET Ø 7,5
135	8.39.02.323	1	NOZZLE Ø 1
136	2.23.15.905	1	ROUND GASKET AN-5
155	8.38.12.420	1	STRAP
159	2.23.15.930	1	ROUND GASKET AN-30
161	8.38.05.301	1	KIMA-6 TANK
162	8.38.08.301	1	KIMA-9 TANK
163	8.38.12.301	1	KIMA-12 TANK
164	8.39.02.314	1	COLLAR SEAL
165	8.38.05.314.1	1	CHAMBER VALVE
166	8.39.18.367	1	GRIP
167	2.23.15.914	1	ROUND GASKET AN-14
292	8.38.08.328	2	HOSE BUSHING
293	8.38.12.312	2	NUT
346	8.39.47.365	1	LANCE FILTER
349	2.23.16.903	1	ROUND GASKET AN-3
356	8.39.46.366	1	HANDLE BODY
358	8.39.46.368	1	BLACK GRIP
363	8.39.41.342	1	SPRING LANCE
406	8.38.46.303	1	CHAMBER
407	8.38.46.308	1	HANDLE
544	8.28.40.322	1	SPRAYER
608	2.23.16.906	1	ROUND GASKET AN-6
726	8.38.08.803	1	ELBOW WITH NOZZLE
741	8.38.12.802	1	STRAP WITH RINGS (12)
742	8.38.05.805	1	COMPLETE HOSE
743	8.38.08.801	1	COMPLETE HANDLE
752	8.38.45.803	1	TUBE WITH NUTS
753	8.38.45.804	1	COMPLETE LANCE
874	8.38.77.809.1	1	EXTENSION PIECE 0,42 M.
904	8.39.47.811	1	FILTER WITH GASKET
921	8.38.46.601	1	COMPLETE CYLINDER
993	8.38.05.806.4	1	SAFETY VALVE
1024	8.34.46.815	1	SET OF NOZZLES
1051	8.34.47.801	1	PRESSURE REGULATOR
	8.38.05.200	1	INSTRUCTION SHEET
	8.38.05.201	1	KIMA-6 PACKAGING
	8.38.08.201	1	KIMA-9 PACKAGING
	8.38.12.201	1	KIMA-12 PACKAGING