



Syringe spraying lance with adjustable nozzle and stream in open jet position of up to 7 meters for a wide range of use at heights (tree treatments, roof cleaning...)



Advantages

- Dual effect spraying lance.
- Equipped with 2 attachable 4m hoses for greater perimeter mobility on the ground and at height.
- Adaptable to different containers/tanks thanks to the counterweight with an incorporated filter.

Technical information

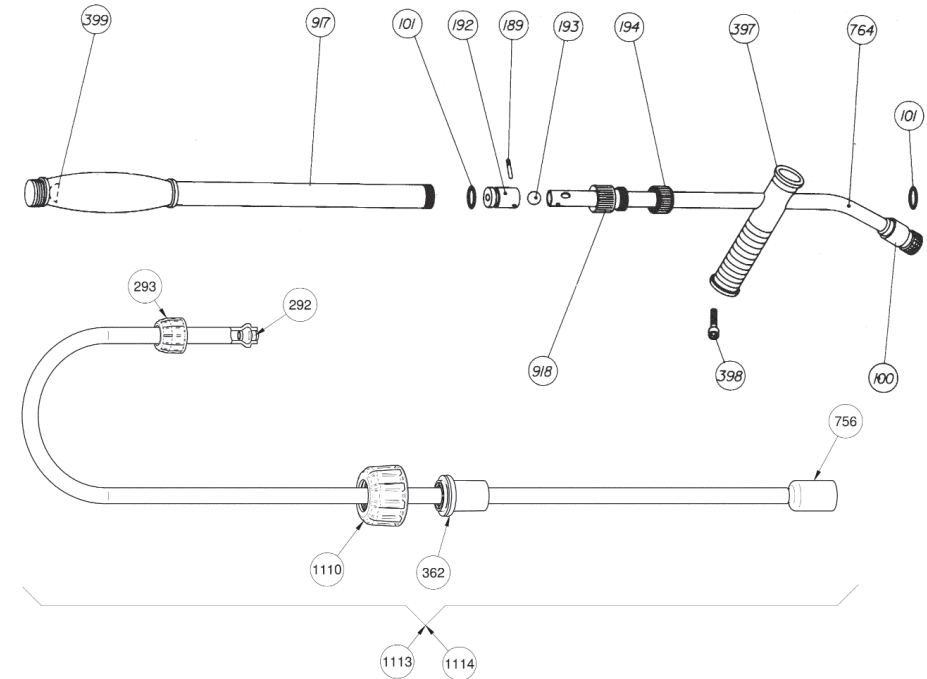
Technical information	ATLAS 4X4
HOSE	8 m (translucent PVC)
STANDARD NOZZLES	Adjustable conical
LANCE	Chromed-plated brass lance with dual effect hydronette system.
GROSS WEIGHT	1.16 Kg
NET WEIGHT	0.75 Kg
VERTICAL STREAM RANGE	5.3m
HORIZONTAL STREAM RANGE	7m
HORIZONTAL SPRAY RANGE	1.7m

Logistics data

Logistics data	ATLAS 4X4
CODE	8.36.481
EAN	84.14685.01040.7
CONDITIONING	1 unit
UNITS PER PALLET	60 units
DIMENSIONS PER PALLET	1200 X 800 X 855

SPARE PARTS

Extend the service life of your sprayer easily replacing parts



N.	COD.	Q	SPARE PARTS NAME	N.	COD.	Q	SPARE PARTS NAME
100	8.39.05.015	1	1.5 NOZZLE	398	2.59.26.740	1	SCREW
101	2.23.15.908	4	ROUND GASKET AN-8	399	8.39.18.314	1	CLOSING BALL
189	8.39.05.004	1	PIN	756	8.39.05.808	1	WEIGHT
192	8.39.05.007	1	PISTON	764	8.39.05.802	1	TUBE WITH NOZZLE
193	2.20.08.901	1	STAINLESS STEEL BALL Ø 6	917	8.36.45.801	1	BODY, COMPLETE
194	8.39.05.312	1	NUT WITH LUBRICATOR	918	8.36.45.804	1	GREASING NIPPLE
292	8.38.08.328	1	HOSE BUSHING	920	8.36.45.322	1	SPRAYER ATLAS WITHOUT HOSE
293	8.38.12.312	1	NUT	1110	8.39.08.304	1	NUT
362	2.23.15.915	1	ROUND GASKET AN-15	1113	8.36.45.809	1	ATLAS COMPLETE HOSE
397	8.36.45.306	1	GRIP	1114	8.36.48.808	1	4M ATLAS COMPLETE HOSE