



Electric battery sprayer (12V Li-Ion) with 10 litre capacity, lightweight and compact. Sprayer suitable for medium/large gardens.



Advantages

- Effortless and easy to use lithium battery sprayer (manual pumping is not required).
- Instant start-up and stop of spraying.
- The battery is protected and it is easy to access and place.
- Suitable for application of products of natural origin (pelargoniconic, acetic, etc...).



Technical information	
Technical information	EVOLUTION 10 LT
VALVE	NO
HOSE	Reinforced PVC
STANDARD NOZZLES	Adjustable conical nozzle and fan
LANCE	Fibreglass
USEFUL CAPACITY	10 L
TOTAL CAPACITY	10 L
NET WEIGHT	3.6 Kg
WIDE FILLER OPENING	YES
SET OF NOZZLES FOR HERBICIDE AND INSECTICIDE TREATMENTS	YES
LANCE AND EXTENSIONS	Lance
STRAPS	Padded and adjustable. Adjustable in the breast strap
BATTERY	12V Li-Ion
WORKING POSITIONS	1
AUTONOMY	100-150 L
HANDLE	PP

Logistics data	
Logistics data	EVOLUTION 10 LT
CODE	8.30.49
EAN	84.14685.04014.5
CONDITIONING	1 unit
UNITS PER PALLET	21 units
DIMENSIONS PER PALLET	1200 X 800 X 1180

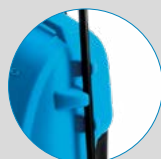
Functional information



Ergonomic and robust clamping nut



Fibreglass lance



Lance fasteners for easy transport



Integrated and ergonomic transport handle with large filling opening



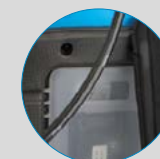
Low-effort ergonomic handle



Reinforced hose



Padded and adjustable straps with zipper



Lithium battery (12V)

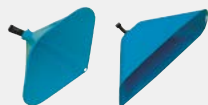


ACCESSORIES

Personalize your sprayer adapting it to your application needs (height, hard-to-reach areas...)



3.2 M TELESCOPIC LANCE
Reference 8.35.40.913
5.4 M TELESCOPIC LANCE
Reference 8.35.40.915



CONICAL HOOD
Reference 8.34.40.870
RECTANGULAR HOOD
Reference 8.34.40.871



TELESCOPIC EXTENSION
Reference 8.35.40.876



6 M HOSE
Reference 8.30.45.805



ANTI-DRIFT NOZZLE (INDUCED AIR) 80°
Reference 8.34.46.814
ANTI-DRIFT NOZZLE (INDUCED AIR) 120°
Reference 8.34.46.804



BATTERY EVOLUTION 10 LT
Reference 8.30.49.816



0.25 M FLEXIBLE TUBE
Reference 8.34.60.937



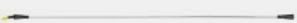
LOW-VOLUME WEED-KILLERS ELBOW
Reference 8.34.60.935



1 M FIBREGLOSS LANCE TUBE WITH COMPLETE ELBOW
Reference 8.34.60.873
1.5 M FIBREGLOSS LANCE TUBE WITH COMPLETE ELBOW
Reference 8.34.60.874



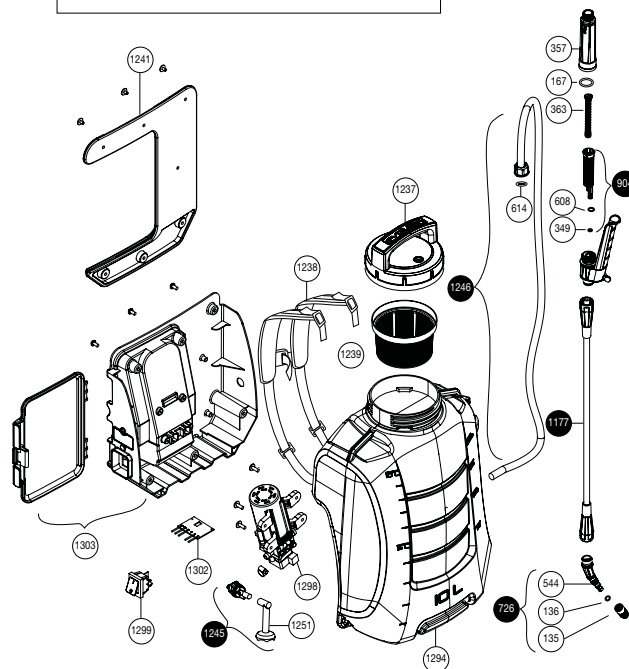
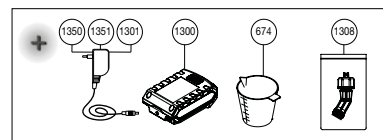
EXTENSION 0.5M
Reference 8.35.40.870



1 M ALUMINIUM LANCE TUBE WITH COMPLETE ELBOW
Reference 8.34.60.871
1.5 M ALUMINIUM LANCE TUBE WITH COMPLETE ELBOW
Reference 8.34.60.872

SPARE PARTS

Extend the service life of your sprayer easily replacing parts.



N.	COD.	Q	SPARE PARTS NAME
135	8.39.02.323	1	NOZZLE 1MM
136	2.23.15.905	1	ROUND GASKET AN-5
167	2.23.15.914	1	ROUND GASKET AN-14
349	2.23.16.903	1	ROUND GASKET AN-3
357	8.39.46.367	1	GRIP
363	8.39.41.342	1	FILTER SPRING
544	8.28.40.322	1	SPRAYER
608	2.23.16.906	1	ROUND GASKET AN-6
614	2.23.16.908	1	ROUND GASKET AN-8
674	8.39.41.350	1	100 ML DOSER
726	8.38.08.803	1	ELBOW WITH NOZZLE
883	8.39.41.801	1	COMPLETE HANDLE
904	8.39.47.811	1	FILTER WITH GASKET
1177	8.18.35.627	1	545MM TUBE WITH NUTS
1237	8.30.45.602	1	CAP
1238	8.30.45.607	1	STRAP
1239	8.30.45.302	1	FILTER
1241	8.30.45.804	1	BACKREST WITH SCREWS
1245	8.30.45.605	1	ABSORPTION SYSTEM
1246	8.30.45.806	1	REPLACEMENT HOSE
1251	8.30.45.329	1	ABSORPTION FILTER
1294	8.30.49.301	1	TANK
1298	8.30.49.808	1	PUMP
1299	8.30.49.813	1	SWITCH
1300	8.30.49.816	1	BATTERY (12V LI-ION)
1301	8.30.49.817	1	EU-(BATTERY 12V LI-ION) CHARGER
1302	8.30.49.818	1	ELECTRONIC BOARD
1303	8.30.49.603	1	COMPLETE TANK BASE
1308	8.30.49.900	1	YELLOW ELBOW LD
1350	8.30.49.831	1	USA-(BATTERY 12V LI-ION) CHARGER
1351	8.30.49.832	1	UK-(BATTERY 12V LI-ION) CHARGER