



Compression sprayer with 5 litre useful capacity specifically designed and equipped for the removal of weeds and undergrowth from the garden, focused application on trails and between tiles. It is also a great weeding tool for professional gardeners and roof weeding. Sprayer suitable for use in medium gardens.



Advantages

- Specific equipment for weed removal applications with drift protection.
- Safe and no overpressure risk thanks to the safety valve.
- The handle makes filling and transportation easy.
- Translucent tank to see the liquid level.
- Complete use of the liquid thanks to the lower hose connection.
- Suitable for application of products of natural origin (pelargonic, acetic, etc...).



Technical information

Technical information	DESHERBAGE 7
VALVE	YES
HOSE	1.3m PVC
STANDARD NOZZLES	Adjustable conical
LANCE	Fibreglass
USEFUL CAPACITY	5 L
TOTAL CAPACITY	7 L
LITRES/MIN. 1,5 BAR	0.43 l/m
LITRES/MIN. 3 BAR	0.60 l/m
GROSS WEIGHT	1.73 Kg
NET WEIGHT	1.31 Kg
WIDE FILLER OPENING	YES
STANDARD ACCESSORIES	0.42 m extension and conical hood with fan nozzle
LANCE AND EXTENSIONS	Lance
STRAPS	Adjustable
PRESSURE REGULATOR	NO

Logistics data

Logistics data	DESHERBAGE 7
CODE	8.18.43
EAN	84.14685.10214.0
CONDITIONING	4 units
UNITS PER PALLET	40 units
DIMENSIONS PER PALLET	1200 x 800 x 1070

MAINTENANCE KITS



PP MAINTENANCE KIT
Reference 8.38.05.870
Keep your sprayer at peak performance. Designed for 5-9 L sprayers.

ROUND SEAL AN-5 No. 136	2.23.15.905	
RETAINER CLAMP No. 164	8.39.02.314	
ROUND SEAL AN-30 No. 159	2.23.15.930	
CHAMBER VALVE No. 165	8.38.05.314.1	

Functional information



Hose connections to the lance and to the tank by thread without clamps or fittings



Low-effort ergonomic handle



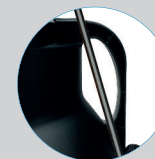
Operation handle. Easy to use



Wide filler opening



Safety valve. Automatic release of excess pressure



Transport handle



42 cm extendable lance to reach remote areas or areas of difficult access



Conical bell for precise and localised application of the treatment, avoiding drift



Translucent tank to view the liquid level



Wide, sturdy and adjustable shoulder strap

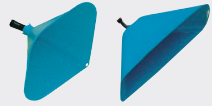


Fibreglass lance



ACCESSORIES

Personalize your sprayer adapting it to your application needs (height, hard-to-reach areas...)



CONICAL HOOD
Reference 8.34.40.870
RECTANGULAR HOOD
Reference 8.34.40.871



NOZZLE SET
Reference 8.34.46.870



NORMAL WEED-KILLERS ELBOW
Reference 8.34.60.934



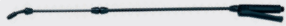
LOW-VOLUME WEED-KILLERS ELBOW
Reference 8.34.60.935



QUADRUPLE BOOM
Reference 8.34.60.870



0.25 M FLEXIBLE TUBE
Reference 8.34.60.937



COMPRESSION TELESCOPIC LANCE (+ADAPTER)
Reference 8.34.60.938



EXTENSION 0.5M
Reference 8.35.40.870



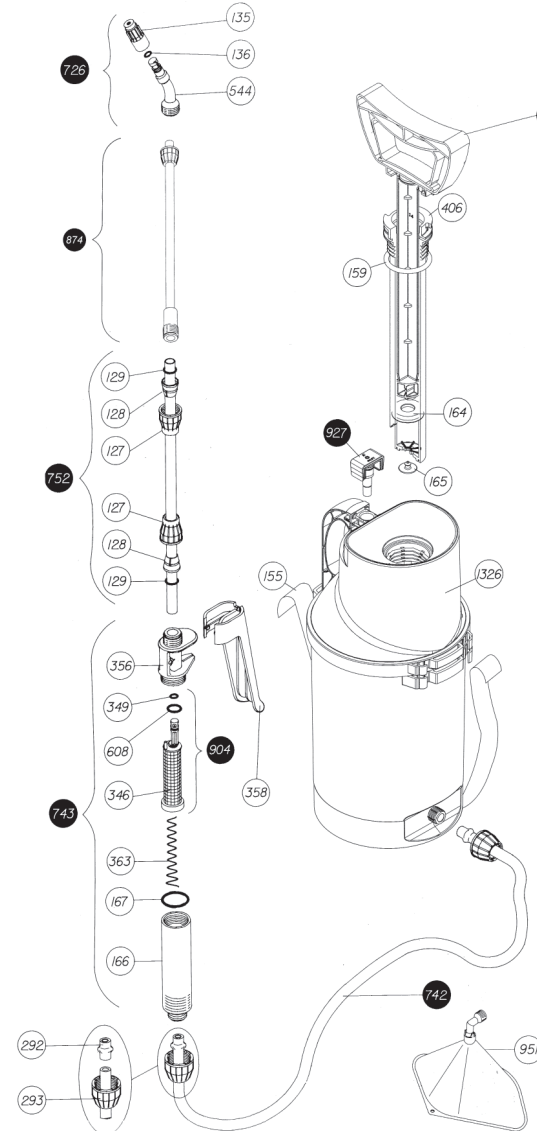
EXTENDIBLE DOUBLE NOZZLE
Reference 8.35.40.872



FLEXIBLE DOUBLE NOZZLE
Reference 8.35.40.871

SPARE PARTS

Extend the service life of your sprayer easily replacing parts.



N.	COD.	Q	SPARE PARTS NAME
127	8.38.12.323	2	CONE NUT
128	8.38.12.324	2	Ø 8 CONE
129	2.23.99.910	2	ROUND GASKET Ø 7,5
135	8.39.02.323	1	NOZZLE Ø 1
136	2.23.15.905	1	ROUND GASKET AN-5
155	8.38.12.420	1	STRAP
159	2.23.15.930	1	ROUND GASKET AN-30
164	8.39.02.314	1	COLLAR SEAL
165	8.38.05.314.1	1	CHAMBER VALVE
166	8.39.18.367	1	GRIP
167	2.23.15.914	1	ROUND GASKET AN-14
292	8.38.08.328	2	HOSE BUSHING
293	8.38.12.312	2	NUT
346	8.39.47.365	1	LANCE FILTER
349	2.23.16.903	1	ROUND GASKET AN-3
356	8.39.46.366	1	HANDLE BODY
358	8.39.46.368	1	BLACK GRIP
363	8.39.41.342	1	SPRING LANCE
406	8.38.46.303	1	CHAMBER
544	8.28.40.322	1	SPRAYER
608	2.23.16.906	1	ROUND GASKET AN-6
726	8.38.08.803	1	ELBOW WITH NOZZLE
742	8.38.05.805	1	COMPLETE HOSE
743	8.38.08.801	1	COMPLETE HANDLE
752	8.38.45.803	1	TUBE WITH NUTS
815	8.38.48.601	1	COMPLETE CYLINDER
874	8.38.77.809.1	1	EXTENSION PIECE 0.42 M
904	8.39.47.811	1	FILTER WITH GASKET
927	8.18.47.806	1	SAFETY VALVE
951	8.34.40.931.1	1	CONICAL HOOD
1326	8.18.43.801	1	TANK
	8.18.43.200	1	INSTRUCTION SHEET
	8.18.43.201	1	PACKAGING